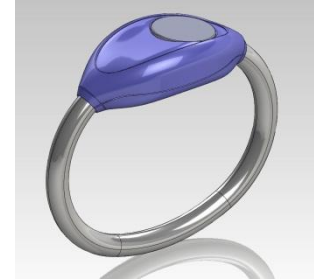


## 1 DESCRIPTION

The Sentag wristband is a security device to be used by swimmers in pool areas equipped with a Sentag system. This unit is programmed to monitor the status of the swimmer. This is obtained via a depth sensor combined with a timer. If there is an abnormal situation the alarm system in wristband activates. The wristband transmits an ultrasonic signal in the water. This signal can be recognized by listening devices, such as hydrophones.



## 2 FUNCTIONALITY

### 2.1 Active mode

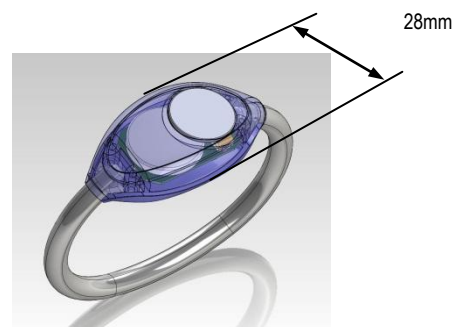
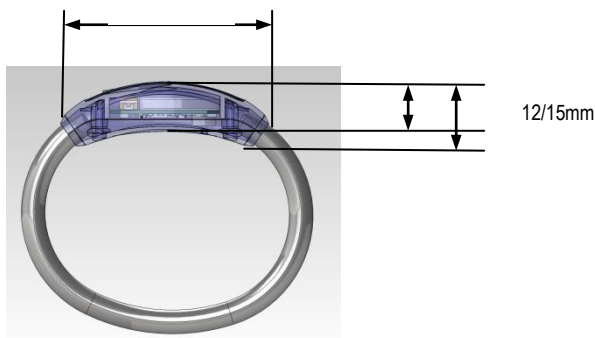
If swimmer and wristband is below depth threshold(X) in more than threshold seconds(Y) the alarm system is activated and a ultrasonic alarm is transmitted. X and Y have default values of 60cm and 40 seconds. It is recommended to change those values if Sentag system is used in child pool area or disabled pool area.

### 2.2 Sleep mode

Wristband electronics enters sleep mode in 30 minutes after active mode to save battery life. To wake up wristband user has to swim (depth variations) in 20 seconds. This is an adjustable setting.

## 3 TECHNICAL DATA

- Plastic housing with molded electronics and RFID chip.
- Wristband is made of a 8mm silicon tube in various length and color.
- Depth sensor with silicon protection cap
- Power battery: Buttoncell Lithium 3V/23mm, 250mAh.
- Battery lifetime: 4-5 years with normal usage.
- LED communication to check status and change threshold values (SPU22)





## POOL SECURITY WRISTBAND

### 4 HOW TO ORDER

Part no.	Description	RFID	Tube length Child/Female/Male
SenTAG 60008	Standard wristband housing/ Grey	Yes Mifare UL	100/120/140mm
SenTAG 600081	Customized wristband housing/ Optional color	Yes Mifare with print	100/120/140mm

### 5 ASSESSORIES

---

**Wristband tube                      Part no: SenTAG 600085**

This tube is made of natural silicon to be 100% non-allergic.  
The wristband tube can be ordered in various lengths and colors.  
Diameter 8mm

---

**RFID Chip 18mm                      Part no:**

Wristband can be equipped with RFID chip to suit most common access systems.  
MIFARE UL/ 1k or TAG IT Iso

---

**SenTag Programmer unit      Part no: SPU22**

This unit allows the user to check wristband battery life, wristband parameters and  
Change wristband threshold settings.

This unit can only be used together with SenTAG software. STC V2.01.

---

